

TRIMO

ARCHITECTURAL
SOLUTIONS

TRIMO DATA CENTRE
SOLUTIONS

EN



DC requirements

Delivering reliability

Data centres require fire-safe, airtight, energy-efficient building solutions that support reliable operation and scalable growth. With increasing performance demands, the building envelope plays a key role in protecting critical zones, maintaining stable internal conditions and supporting the safe integration of service openings.

KEY INFRASTRUCTURE REQUIREMENTS

- High thermal loads,
- Cooling architecture,
- Fire safety and airtightness,
- Energy efficiency and carbon footprint,
- Security and resilience,
- Continuous, safe operation,
- Short time to market

SCAN



for the Trimmo
Data Centre
Handbook

WHY TRIMO INSULATED PANELS



Lower embodied carbon

Embodied carbon is becoming increasingly important in achieving low carbon footprint throughout a DC's whole life cycle.

SOLUTION

Qbiss One NEXT and Trimoterm NEXT achieve up to 69 percent lower carbon footprint compared to standard panels.



Airtightness & moisture control

For a DC, airtight, watertight joints are not just a building detail, they support moisture control and the stable management of cold and warm airflow.

SOLUTION

A sealing process using precisely profiled panel joints and seals supports the façade's resistance to humidity and wind.



Fire safe solutions

DC battery systems, diesel generators, and ventilation shafts increase fire risk, so the building envelope must be designed to slow fire spread, enable evacuation, and protect valuable IT equipment.

SOLUTION

Due to their non-combustible core, Trimmo panels enable high fire resistance. In some designs, this can reach EI 240.



Long-term reliability

Continuous operation makes tested, certified products essential for safe long-term operation.

SOLUTION

Selected Trimmo systems are FM Approved and LPCB certified, supported by additional international approvals.

Data centre

Reliable performance and fast delivery

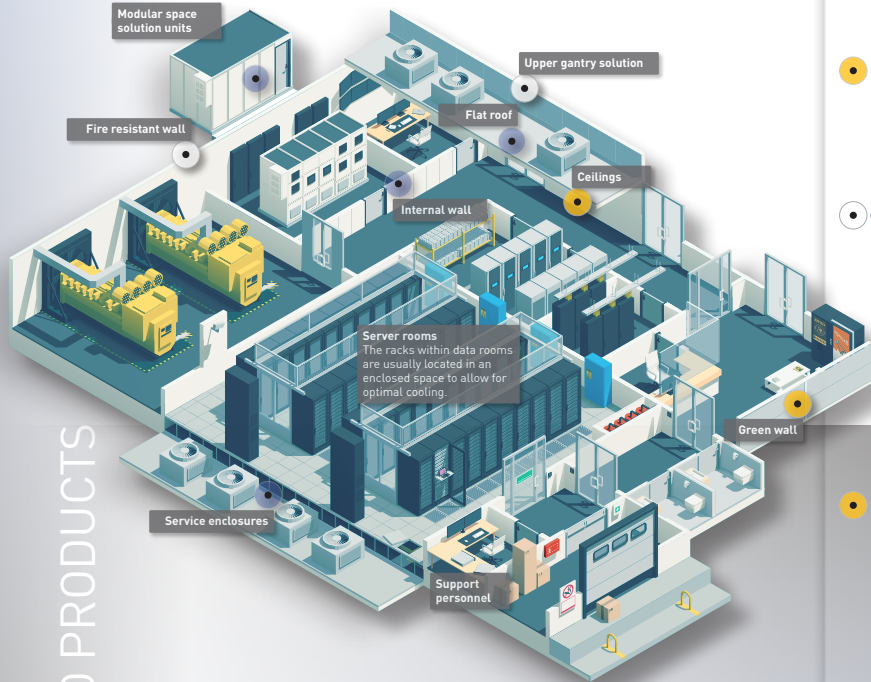
To meet increasing demands for speed and scalability, data centre developers are turning to modular building concepts. Trimo's envelope systems support this shift with prefabricated, all-in-one solutions that ensure quality and predictable on-site assembly. This enables efficient, safe, uninterrupted data centre operations. This approach also helps reduce construction schedules and improve build quality.

KEY BENEFITS OF TRIMO PANELS

- Proven fire performance,
- Multiple design variations,
- Safe integration of VE/MEP openings,
- All-in-one envelope solution,
- Faster on-site installation,
- Reduced air leakage & internal environmental control,
- Lower material waste,
- Lower operational costs over the building lifecycle,
- Aesthetic control

TRIMO SOLUTIONS

- External façade and roof systems
- Internal wall and ceiling systems,
- Rooftop HVAC and service enclosures,
- Safe corridor walls and fire-resistant escape routes,
- Additional customised façade



TRIMO PRODUCTS

• Timoterm FTV panel



• Timoterm FTV HL panel



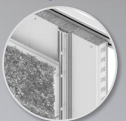
• Qbiss One facade system



• Timoterm roof panel



• Trimo green wall



• Trimo backing wall



Data centre product selection

Reliability starts with fire safety, airtightness, and fast delivery

Product	FUNCTION				
	Acoustic	Backing wall	Fire resistance	ArtMe	Digital print
Qbiss One	<input type="checkbox"/> ₂₎		<input checked="" type="checkbox"/>	<input checked="" type="checkbox"/>	<input type="checkbox"/> ₁₎
Qbiss Screen			<input checked="" type="checkbox"/>	<input checked="" type="checkbox"/>	<input type="checkbox"/> ₁₎
Trimoterm FTV	<input type="checkbox"/> ₁₎	<input checked="" type="checkbox"/>	<input checked="" type="checkbox"/>	<input checked="" type="checkbox"/>	<input type="checkbox"/> ₁₎
Trimoterm FTV HL	<input type="checkbox"/> ₁₎		<input checked="" type="checkbox"/>	<input checked="" type="checkbox"/>	<input type="checkbox"/> ₁₎
Trimoterm SNV	<input type="checkbox"/> ₂₎		<input checked="" type="checkbox"/>		

■ Approved; ₁₎ Approved, available upon request; ₂₎ Approved for steel sheet side B, available upon request

PANEL FAB ANALYSIS

Features	Advantages	Benefits
Total wall solution	Tailor-made elements, corner, curved elements	One supplier, controlled maintenance
Self-supporting	Suitable for large spans, elements up to 14 m	Reduced need for additional structural support
Factory-controlled production	Consistent quality, ready-to-install product	Reduced quality risk and latent defect risk
Mineral wool insulation core	High fire and thermal resistance, energy efficiency	Low insurance premiums, regulation compliance
Lightweight	Easy handling & faster installation	Lower construction time, light-duty lifting equipment
Water- and airtightness	Low air change rates, aesthetically clean joints	Better building performance, reduced air leakage
Tailor-made solutions	In-house knowledge, 50+ years of experiences	Optimal client-based cost solution, aesthetic control
CAD & BIM libraries, tools	Up-to-date, online availability	Predictability, reduced errors, better cost control
Burglary resistance	Class RC3 burglary resistance	Safety of personnel and equipment, guaranteed uptime
Flexible warranties	Robust, durable, high-quality coatings	Low-cost maintenance, 10-30 years warranty
98% recyclable sustainable materials	Environmentally friendly materials	Helping clients meet sustainability targets
Extreme thermal values	Excellent thermal resistance & energy efficiency	Reduced HVAC costs, energy regulation compliance
Moisture resistant	No condensation & healthier work environment	Environment for optimal equipment performance
Acoustic performance	Noise reduction for demanding environments	Quieter interior spaces, offices and compartments
Fire performance	Tested solutions for external & internal wall panels	Uptime, fire compartmentation, fire risk management
Range of thicknesses and finishes	Flexible design (thermal, structural) options	Client-based, customisable solutions



FACADE SYSTEM / QBISS ONE

Fire-safe, airtight, visually appealing façade solution.

SOLUTION

Fire resistance up to EI 120

Up to 6,5 m span between columns



INTERNAL WALL SYSTEM / TRIMOTERM FTV

Clean, fire-safe wall solution with acoustic performance.

SOLUTION

Fire resistance up to EI 240

Food-safe coating options



CEILING SYSTEM / QBISS ONE, TRIMOTERM FTV HL

Fire-safe modular ceiling solution with acoustic performance.

SOLUTION

Sound absorption coefficient up to 0.9

1.000 mm module



ROOF SYSTEM / TRIMOTERM SNV

Load-bearing roof panel with integrated thermal insulation.

SOLUTION

Thermal insulation integrated in the product

Panel lengths up to 12,0 m

TECHNICAL EXCELLENCE

Service

Worldwide know-how and experience in engineering, production, and services

RANGE OF SERVICES & SUPPORT

- BIM libraries (ARCHICAD, Revit)
- Architectural & design details
- 3D model rendering, BIM models, Animation, VR
- Technical consulting
- Energy calculations
- Static calculations
- Customised solution development and prototype testing
- Education and training
- On-site installation training, demonstration, and support

Downloads

BROCHURES

- Façade systems
- Roof systems
- General



DESIGN TOOLS

- CAD details
- BIM product libraries



TECHNICAL DOCUMENTS

- Façade systems
- Roof systems
- Handbooks



Business incubator Biograd na Moru, Croatia

EFFICIENT DESIGN

Company presentation

Trimo is a high-quality global supplier of innovative, flexible, functional, energy-efficient architectural building envelope solutions.

Its operations focus on customers by understanding their needs and serving them with the highest level of service and the highest quality products. Trimo's work is underlined with the company's core values of partnership, reliability, responsibility, trust, innovation, and passion.

TRIMO D.O.O.

PRIJATELJEVA CESTA 12
8210 TREBNJE, SLOVENIA

T: +386 (0)7 34 60 200

F: +386 (0)7 34 60 127

TRIMO@TRIMO-GROUP.COM

WWW.TRIMO-GROUP.COM

Trimo Group holds full copyrights on the information provided on this media. Therefore, any unauthorised reproduction or distribution is strictly prohibited.

Published by: Trimo d.o.o., EN 04/2026 | www.trimo-group.com

Trimo management office, Slovenia



COMPANY PROFILE

SCAN



to connect
with Trimo
worldwide

Photo rights: Trimo d.o.o.